

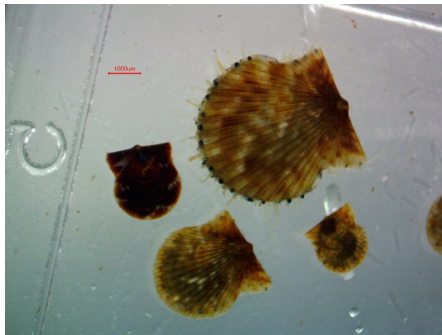
BES COLLOQUIUM

SPRING 2024

Dr. Katie McFarland

RESEARCH BIOLOGIST
NOAA FISHERIES

Wild scallop population resilience:
Using mutli-generational studies to
estimate robustness and adaptive
potential to rapidly changing
environmental conditions



FRIDAY APRIL 26

3PM

CBL5 010

